

PAULA VENDARGON
Prudential Sussex Realty



2996 Lonsdale Ave.
 North Vancouver, B.C. V7N 3J4
 phone: 604-984-9711
 www.vendargon.com

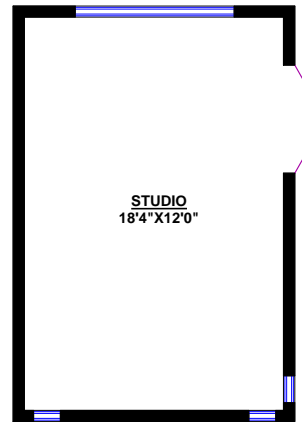
2595 PANORAMA DRIVE, NORTH VANCOUVER

TOTALS*

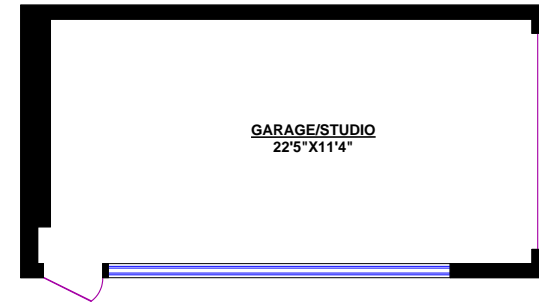
Main Floor: 890 sq.ft.
 Upper Level: 672 sq.ft.
 Lower Level: 719 sq.ft.
 TOTAL: 2,281 sq.ft.

OTHER AREAS:

Studio: 253 sq.ft.
 Garage/Studio: 306 sq.ft. (approx)
 Deck: 188 sq.ft.

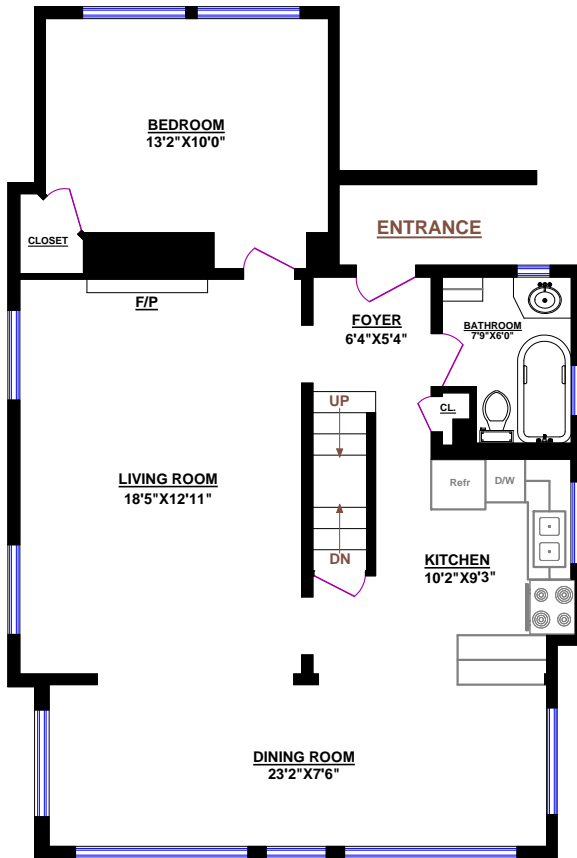


STUDIO

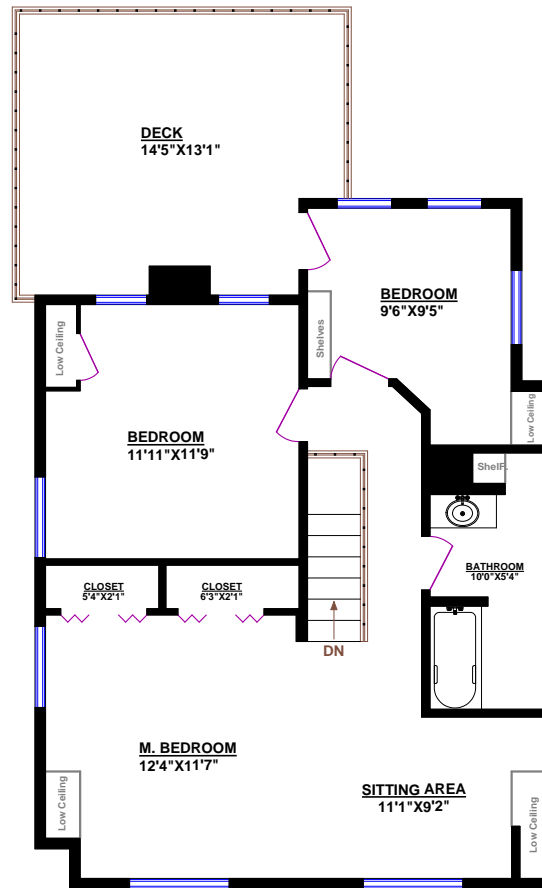


GARAGE / STUDIO

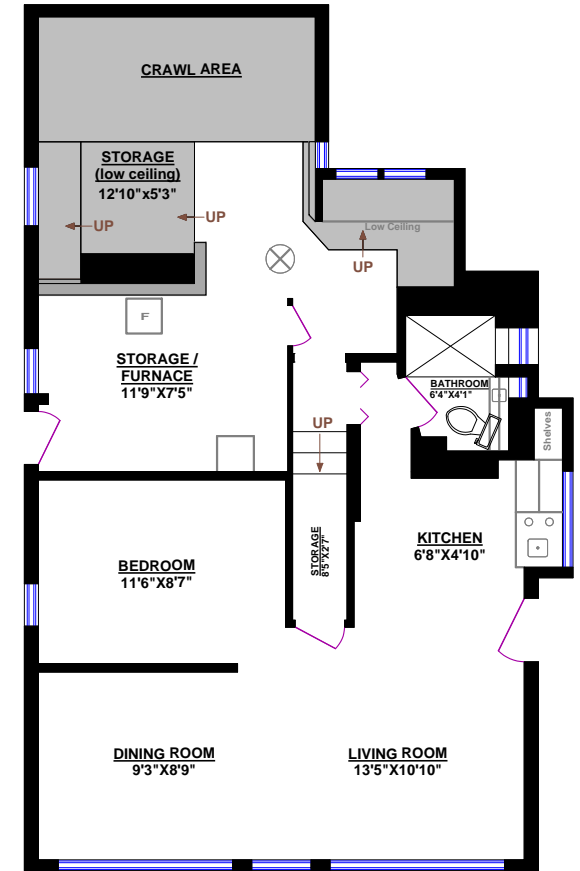
* Does not include low ceiling areas



MAIN FLOOR



UPPER LEVEL



LOWER LEVEL

